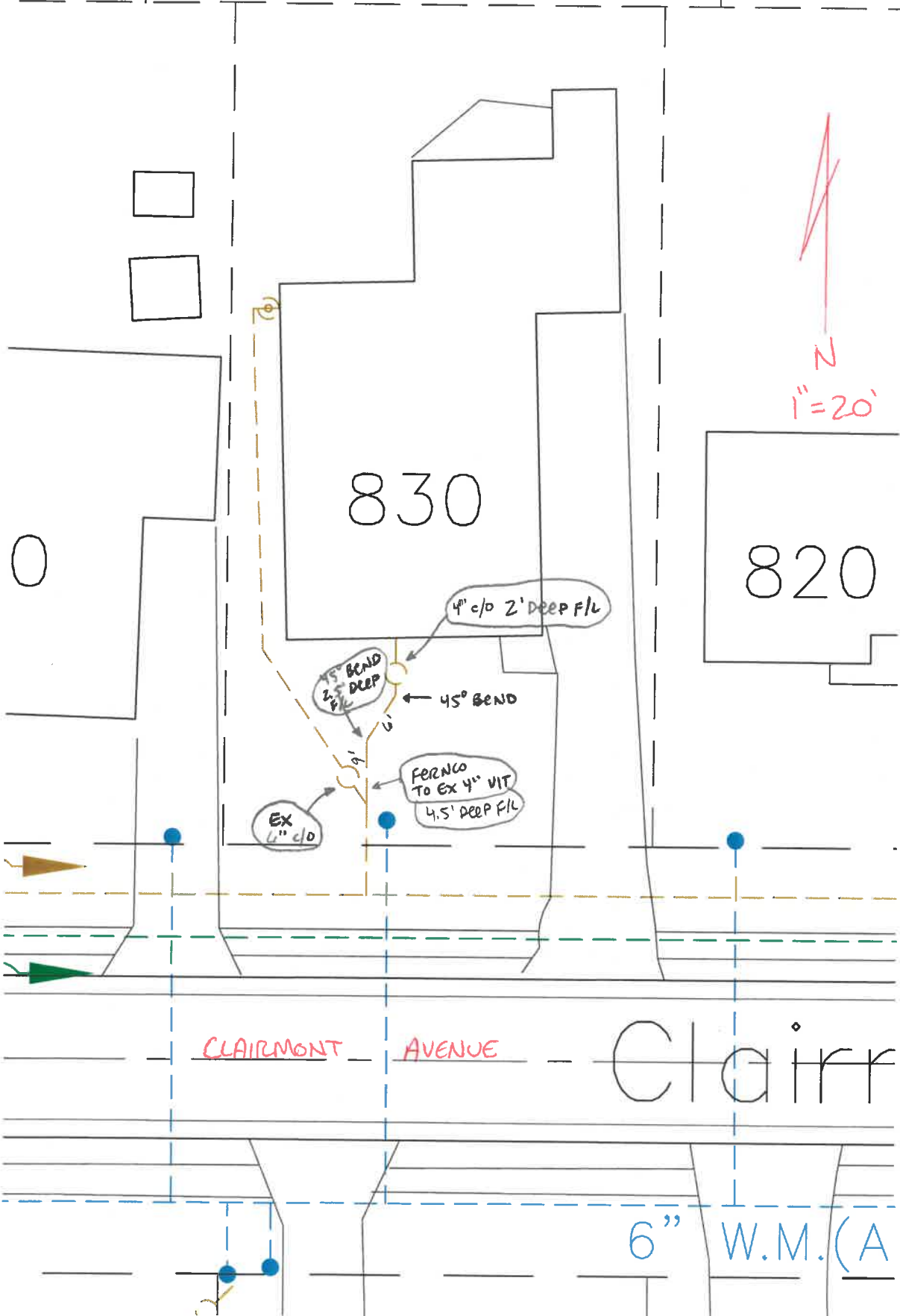


DATE: 9-13-12

INSPECTED BY: MARTY CROSSLAND

INSTALLED BY: JA HILLIS / MOORE PLUMBING



830

820



4" c/d 2' DEEP F/L

45° BEND
2' DEEP F/L

45° BEND

FERRO TO EX 4" VIT
4.5' DEEP F/L

EX
4" c/d

CLAIRMONT AVENUE

Clairr

6" W.M. (A